



# HTL RANGE

ENGINEERED TO BOOST  
YOUR PERFORMANCE

[haulotte.com](https://haulotte.com)

**Haulotte**   
EQUIPMENT





## CONTENTS

**INTRODUCTION ..... 3**

**HAULOTTE HTL RANGE ..... 4**

**THE ULTIMATE VERSATILITY ..... 7**

**HTL ADDED VALUE ..... 15**

## INTRODUCTION



Haulotte is a global leader of people and material lifting equipment. As European leader, the group designs, manufactures and markets a wide range of products focused on mobile elevating work platforms and telehandlers.

We offer our customers our best-in-class knowledge and expertise so that Haulotte telehandlers will become **ESSENTIAL** in your daily work.

The Haulotte telehandler is a versatile machine that can be used for applications **SUCH AS** material handling, earth-moving and lifting bulky loads. The comprehensive range of attachments means you can adapt your telehandler to any task.

## HAULOTTE

### DIVERSIFIED OFFERING COVERS

#### 3 TELEHANDLER RANGES

#### CUSTOMIZED FINANCING SOLUTIONS

to facilitate investments in these products

#### 7 PEOPLE LIFTING equipment product ranges

#### INTEGRATED SERVICES to optimize equipment lifecycles and residual values for resale

## SALES & SERVICE NETWORK

A distribution network (Products, Financing Solutions & Services) based in **20 subsidiaries** and offices in strategic markets, supported by a **dealer network giving coverage in more than 100 countries.**



 HAULOTTE FRANCE	 HAULOTTE DO BRASIL
 HAULOTTE HUBARBEITSBÜHNEN GmbH	 HAULOTTE MÉXICO, S.A. de C.V.
 HAULOTTE IBERICA	 HAULOTTE ARGENTINA
 HAULOTTE SCANDINAVIA AB	 HAULOTTE CHILE
 HAULOTTE UK Ltd	 HAULOTTE AUSTRALIA PTY Ltd
 HAULOTTE NETHERLANDS BV	 HAULOTTE SINGAPORE Pte Ltd
 HAULOTTE ITALIA	 HAULOTTE SHANGHAI Co. Ltd
 HAULOTTE POLSKA Sp. Z.o.o.	 HAULOTTE INDIA PRIVATE Limited
 HAULOTTE VOSTOK	 HAULOTTE MIDDLE EAST FZE
 HAULOTTE NORTH AMERICA	 HAULOTTE in JAPAN

EXPERIENCE  
HAULOTTE  
**EXPERTISE  
THROUGH  
THE HTL RANGE.**



**MATERIAL  
HANDLING**



**EARTH  
MOVING**



**ACCURATE  
PLACEMENT**



**PLATFORM  
CAPACITY**



## HAULOTTE HTL RANGE



Thanks to our telehandlers range from 7 m to 17 m and FROM 3.2 T TO 5.2 T, Haulotte HTLs offer the best solution to meet the varied needs of our customers.







**HAULOTTE  
TELEHANDERS**

---

**THE ULTIMATE  
VERSATILITY**

**THE ULTIMATE  
VERSATILITY**

## PERFORMANCE & PRODUCTIVITY

**THE REAR AXLE LOCKING SYSTEM,**  
available as a standard on 14m and 17m models,  
ensures stability in all circumstances.

**« REACHES HIGHER  
AND FASTER, WITH  
A HEAVIER LOAD »**

**Haulotte design:**  
no compromise  
between lifting capacity  
and load chart for  
maximum productivity.

**Evolution area of the gravity center:**

- Without rear axle lock
- With rear axle lock







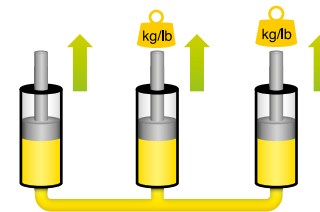
## A SMART TILT CORRECTOR WHICH COMPENSATES FOR ALL GROUND HAZARDS



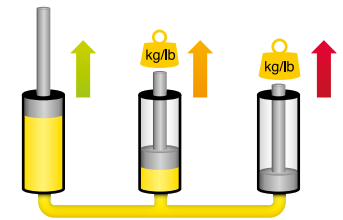
**MATERIAL  
HANDLING**

### **HAULOTTE'S PRIORITY: SAFETY AND STABILITY**

We know that on construction sites all kinds of grounds conditions are possible. The stability of the Haulotte telehandlers ensures operators can work in complete safety at all times. HTLs are used on ground where the rough terrain capabilities are of the utmost importance. In any weather conditions, driving across rubbles, ruts or obstacles, operators can rely on our HTLs. The rough terrain design of the HTL adapts to the ground conditions so that the operator can focus on lifting operations in complete safety.



**With flow sharing,**  
proportional sharing  
of power.



**Without flow sharing,**  
sequential sharing  
of power.

### **SIMULTANEOUS ACTIONS FOR OPTIMAL PRODUCTIVITY**

Flow sharing is a smart management system of the hydraulic flows which enables proportional control.



**THE ULTIMATE  
VERSATILITY**

**POWERFUL  
& ROBUST**

---

**POWERFUL  
GROUND BREAKING**  
for earth moving jobs such  
as ground levelling and  
cleaning of construction sites.

**ROUGH TERRAIN CAPACITIES**  
designed to drive in the toughest  
conditions.





## THE HIGH STRENGTH OF THE MONOBLOCK CHASSIS

guarantees the robustness of the telehandler while protecting the structure from stress.



## WHATEVER YOUR WORKING ENVIRONMENT, YOU CAN RELY ON OUR TELEHANDLERS TO CARRY OUT THE MOST DIFFICULT TASKS

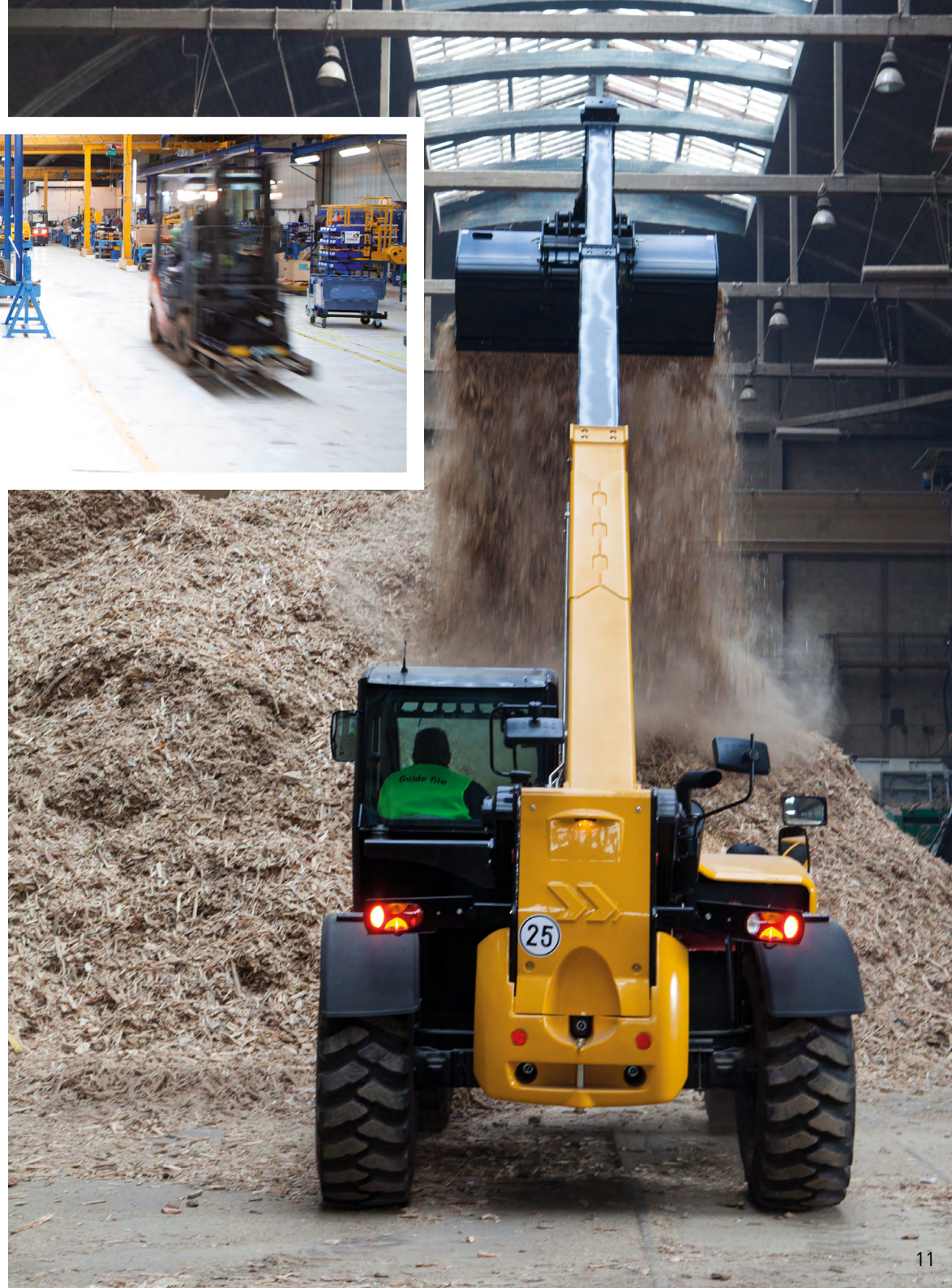
Because Haulotte knows its customers well, we know that our HTLs need to handle a variety of different tasks every day. Our HTLs are robust and withstand stress in the most demanding situations thanks to the strength of the chassis and the design of the machine.

## A HIGH LOAD CAPACITY

increasing the efficiency of operations such as filling trucks with gravel, earth, sand...



**EARTH  
MOVING**





**THE ULTIMATE  
VERSATILITY**

## PRECISION & FLEXIBILITY

**3 DRIVING MODES** for excellent maneuverability in any environment:

- > **2 WS:** when driving on the road.
- > **4 WS:** for the best maneuverability in confined areas.
- > **CRAB STEER:** for sideways movement and precise positioning before lifting.



**2WS**

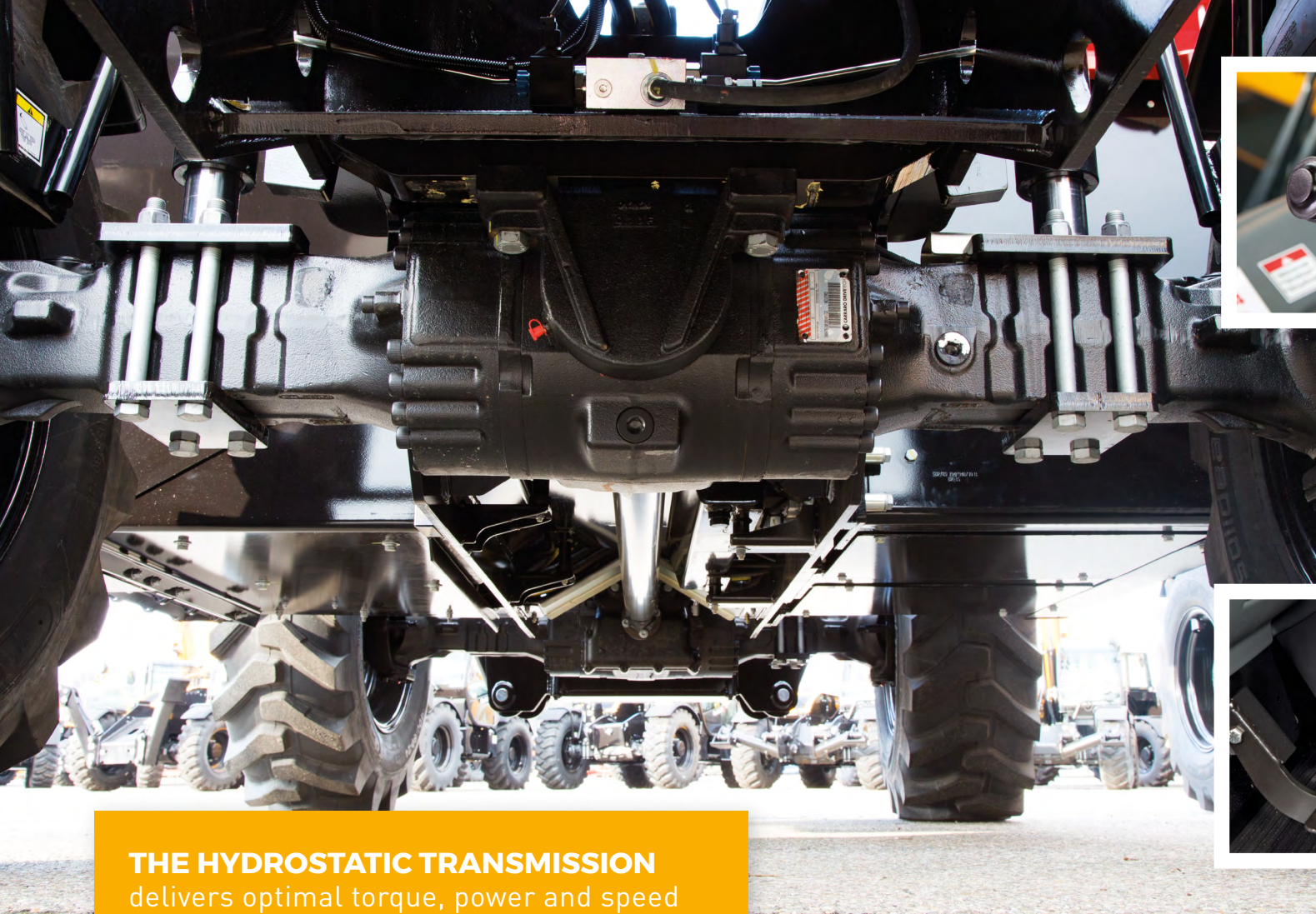


**4WS**



**CRAB**





### Adapt your speed to your environment:

- Worksite mode: 0 to 8 km/h for a higher safety.
- Road mode: 0 to 25 km/h for higher speed on translation.



### The inching pedal

is ideal for smooth driving to easily approach a structure.

### THE HYDROSTATIC TRANSMISSION

delivers optimal torque, power and speed for an unequalled driving comfort.



**ACCURATE  
PLACEMENT**

### THE PERFECT COMBINATION OF USER-FRIENDLINESS AND SMOOTHNESS WHEN PERFORMING PRECISE OPERATIONS.

Telehandlers are used for their versatility combined with their power and their strength. For a wide range of uses, from lifting materials to earth moving applications, Haulotte telehandlers increase your productivity by efficiently combining several operations. The hydrostatic transmission together with the high performing engine distributes continuous power, which means it is equally suitable for working in demanding environments, such as the waste and recycling industry, as for carrying out high precision work.







# HAULOTTE TELEHANDERS

---

H T L  
ADDED VALUE





**HTL ADDED  
VALUE**

**DRIVING POSITION  
REDUCES FATIGUE AT WORK**

Fully adjustable seat with shock absorbers for a perfect fit between man and machine.

## COMFORT & ERGONOMY

### GET ON BOARD AND HAVE A SEAT...

Because comfort is so important for all-day driving, Haulotte has made ergonomics a priority of the new design. All controls have been specifically positioned to be easily accessible according to their frequency of use. As the operator is constantly using the joystick which is the nerve center of the HTL and the main driving controls are ideally positioned close to the left hand.





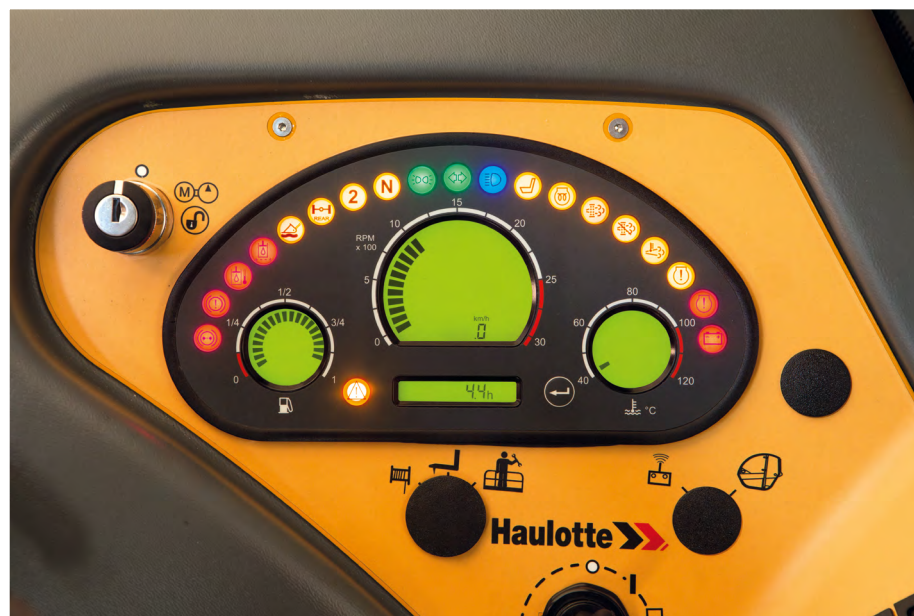


## **A « SMART CONTROL » 4 IN 1 JOYSTICK**

is comfortable and intuitive to use, enabling the operator to precisely control all movements.

## **AN ELECTRONIC AND BACKLIT DASHBOARD**

centralizes all information for the operator.



## **THE LOAD MOMENT INDICATOR (LMI)**

is ideally positioned to be easy to read and includes an automatic cut off when operating with a tilting risk.



**HTL ADDED  
VALUE**

## ATTACHMENTS & OPTIONS

### **FORKS AND TOOLS CARRIAGE**

Essential for precise handling of load on pallets or in big bags.



### **BUCKETS**

Complete range designed for excavation, cleaning machinery, material loading.

### **TOOLS CARRIAGE WITH INTEGRATED HOOK**

Dual use of forks and hook without the need to change any accessories.



### **JIBS**

Equipped with swivel hook design for works with dynamic or static loads.

### **WINCHES**

Usefull for specific works.



### **AERIAL WORK PLATFORM**

Smooth, precise and versatile. Working at height has never been so easy.





## THE PERFECT ACCESSORIES FOR YOUR HTL

Haulotte telehandlers are versatile machines that can be used for a wide range of applications by choosing from Haulotte's comprehensive range of options and attachments.

### OPTIONS FOR ALL NEEDS

Haulotte has developed a wide range of options to meet the needs of all operations. This means that productivity is maximized in all weather conditions and for every kind of task.

#### HEAD OF THE BOOM

- Hydraulic kit for accessories
- Tool carriage for hook 3T
- FEM tool carriage
- 12 V electrical roller supply

#### ENGINE

- DPF solution
- Reverse fan
- Flowsharing
- Refinery kit

#### VISIBILITY

- 4 working lights on cab
- LED lights on the boom / rear LED lights
- Rear camera
- Rear sensor detector

#### CABIN

- Metal windscreen protection
- Deadman joystick
- Extinguisher
- Air conditioning
- Immobilizer

#### TYRES

- Construction and industrial tyres
- Spare wheels
- Tyre puncture sealant
- Solid cured-on tyres



HTL ADDED  
VALUE







## WORLDWIDE SERVICE NETWORK

---

Each subsidiary has its technical team offering training, technical support and advice.

## MAINTENANCE

---

### HAULOTTE TELEHANDLERS ARE RELIABLE MACHINES WHICH HAVE BEEN DESIGNED TO BE EASY TO MAINTAIN

The electronic dashboard gives the user continuous information about the functioning of the HTL, even indicating the maintenance intervals. The diagnostics system gives quick information about the situation and therefore reduces downtime. Maintenance operations are also simpler and faster to execute because the design makes it easy to access components.



### INDICATORS FOR PREVENTIVE MAINTENANCE TO AVOID BREAKDOWNS

The Hour meter indicates the number of remaining hours before maintenance operations.

### FAST DIAGNOSTICS

Diagnostics plug with easy access under the dashboard enables connection to the Optimizer to display technical data.

### TIME SAVED WHEN SERVICING MEANS LESS DOWNTIME

and thus reduce the Total Cost of Ownership.

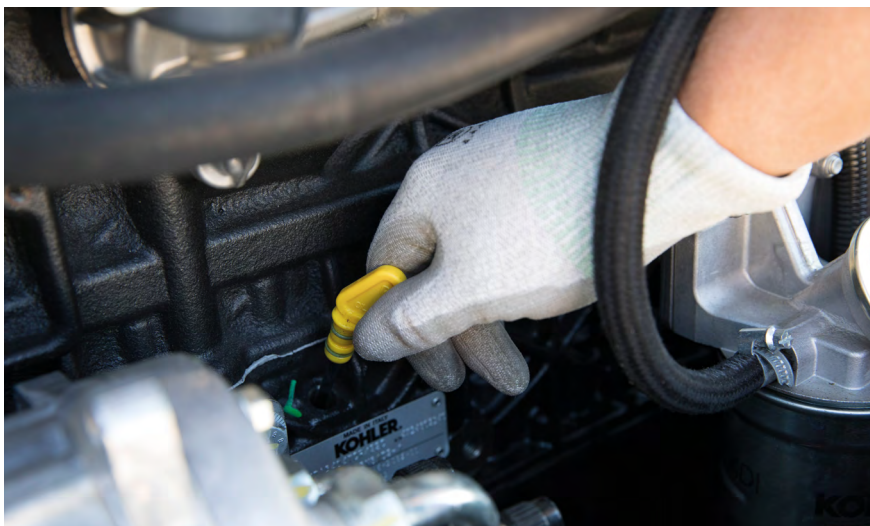


**HTL ADDED  
VALUE**

**Haulotte**   
**SERVICE**

**FULL CARE OF YOUR  
EQUIPMENT**

to ensure your peace of mind



Designed to responsively provide the most efficient support, the Haulotte technical network operates on the phone, on site or within our technical centers. Our on-line solutions also enable you to minimize your downtime.

**TECHNICAL  
SUPPORT**

## TRAINING

Haulotte Training courses can easily be customized to your needs with a «hands-on» approach in your own language. You can also monitor the skill set of your staff and plan their advanced training on-line.

2





## SERVICES CONTRACTS

3



Your Total Cost of Ownership (TCO) is monitored all along the entire operating lifetime of your machines thanks to the expertise of our technical support team. Our portfolio of contracts enables a perfect match with your expectations:

- **PREVENTIVE MAINTENANCE**
- **WARRANTY EXTENSION**
- **PERIODIC LEGAL INSPECTIONS**

4

## GENUINE SPARE PARTS

The Haulotte supply chain organization is fully dedicated to meet your demands of quality spare parts and to optimize the spare parts' supply chain process, from the quotation to the deliveries.

You can manage your orders online 24/7!







**HAULOTTE GROUP**, La Péronnière - BP 9 - 42152 l'Horme - France  
Tel: +33 (0)4 77 29 24 24 · Fax: +33 (0)4 77 29 43 95  
haulotte@haulotte.com · www.haulotte.com

**Haulotte**   
LET'S DARE TOGETHER

4000304920. Non-binding document. We reserve the right to modify the technical characteristics of this document without notice.  
Photo credits: ©Trenta, ©Haulotte, 12/2018